



OHAUS SBCL

Shear Beam Load Cell

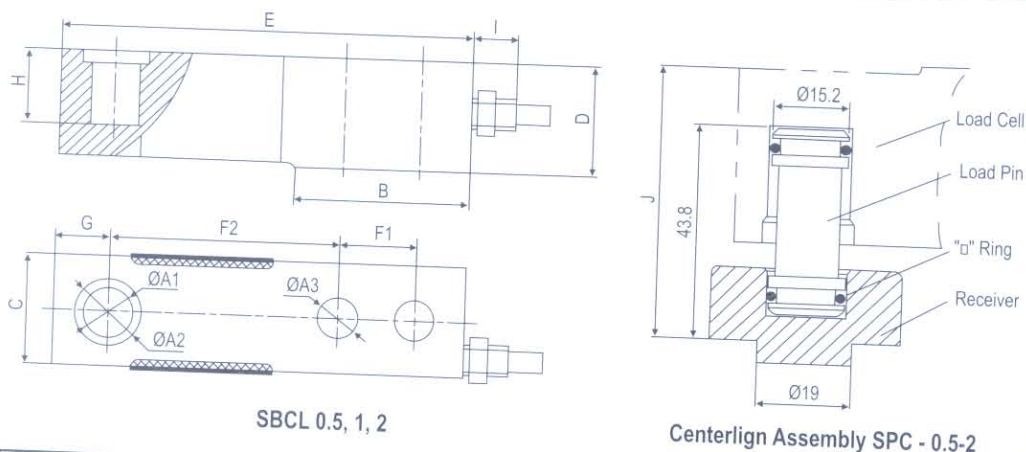


The Ohaus SBCL shear beam load cell provides a high performance-to-value solution for your scale or systems manufacturing in dry applications. Its high accuracy and durable construction make it ideal for use in most common industrial applications such as bench and floor scales, pallet truck scales, construction materials scales and scale replacement markets. Practical features include the following:

- Low-profile alloy steel construction for ideal design and durability
- Capacity models: 500kg, 1000kg, 2000kg to fit common applications
- IP67 protection against dust and water immersion
- Comes with SPC Receiver



General Specifications	Ohaus Model SBCL-0.5t, 1t, 2t
Rated Capacity Models	500, 1000, 2000 kg
Rated Output	2 ± 0.002 mV/V
Non-repeatability	$\leq 0.01\%$ of rated output
Hysteresis	$\leq \pm 0.02\%$ of rated output
Non-linearity	$\leq \pm 0.02\%$ of rated output
Creep (30 min)	$\leq \pm 0.02\%$ of rated output
Zero balance	$\leq 1\%$ of rated output
Temperature Compensated Range	-20°C to 65°C
Operating Temperature Range	-10°C to 40°C
Temperature Coefficient on Output	$\leq \pm 0.02\%$ load/°C
Temp. Coefficient on Zero Balance	$\leq \pm 0.02\%$ of rated output/°C
Input Resistance	$381 \pm 4 \Omega$
Output Resistance	$350 \pm 1 \Omega$
Insulation Resistance (at 50 VDC)	≥ 5000 M Ω
Recommended Voltage	5V to 15V (DC/AC)
Max. Excitation Voltage	20V (DC/AC)
Safe Overload	150% of rated capacity
Ultimate Overload	300% of rated capacity
Protection Class	IP67
Cable Length	3.1m
Load Cell Material	Alloy Steel
Load Cell Type	Shear Beam (J)
Load Cell Accuracy Class	Class C3



Capacity	ØA1	ØA2	ØA3	B	C	D	E	F1	F2	G	H	I	J
500kg	16	22	12.5	57.8	30.2	35	133.4	25.4	76.2	15.4	22	17	55.3
1000kg	16	22	12.5	58.2	36.6	36.6	137	25.4	76.2	18.4	23.7	17	54.6
2000kg	16	22	12.5	58.2	36.6	36.6	137	25.4	76.2	18.4	23	17	55.3

Cable Color	Green	Black	White	Red	Yellow (long)
Code(four-wire circuit)	+Excitation	-Excitation	+Signal	-Signal	Shield

Industry Leading Warranty

Ohaus SBCL load cells are protected by a 12-month warranty on parts. Our rugged construction and stringent quality control have been the hallmarks of Ohaus products since 1907.

Simple to Order

Contact your local dealer for product availability and warranty information.

Ohaus (SEA) Sdn Bhd (536214 U)
 Unit 1.02, 1st Floor, Bangunan Electroscon,
 Jalan Astaka U8/84, Bukit Jelutong,
 40150 Shah Alam, Selangor Darul Ehsan,
 Malaysia.
 Tel: (60) 3 - 7845 5373 / 7845 5773
 Fax: (60) 3 - 7845 3478
 E-mail: OhausSEA@mt.com

Visit us at: www.ohaus.com

With offices throughout Europe,
 Asia, and Latin America

OHAUS CORPORATION
ISO 9001
 Registered Quality Management System

